



# Pines & Needles

Monterey Peninsula Quilters Guild

April 2013

**General Meeting**  
**Monday, April 1, 2013**

**Set-up:** 6:00 p.m.  
**Refreshments:** 6:30 p.m.  
**Meeting:** 7:00 p.m.

Pacific Grove Community Center  
515 Junipero Avenue (at 15th Street)  
Pacific Grove, CA 93950

**What to Bring**

- Willing Volunteer Spirit
- Pen and calendar to volunteer for quilt show shifts
- Check or cash for workshops, raffle tickets
- Raffle quilt money and stubs
- Name tag
- Community quilts
- Library books
- UFOs
- Mini quilts for Raffle
- Sweets & savories
- Show & tell

**MEETING - MONDAY, APRIL 1**

**SPEAKER - Bobbie Moon**

**Sheer Lunacy, the Crazy Path to a Quilting Career**



We have the extremely good luck to welcome Bobbie Moon, co-owner of New Moon Textiles, located at 1756 E. Colorado Street in gorgeous Pasadena, California.

In 2003, Bobbie joined with friend, Dorinne Nieuwenhuijs, to establish New Moon Textiles. Earlier, Bobbie had met Patricia Bianchi, a Guatemalan quilter, who was seeking a U. S. importer and distributor for her beautiful hand-dyed, hand-woven ikat style cottons.

Continued page 2...

## Quilt Show Edition

Please Join Us

*Preview Party 2013*

*Friday, April 12*

*6:00pm to 8:00pm in the evening*

*Chautauqua Hall,*

*16th Street at Central Avenue,*

*Pacific Grove*

*What is a Preview Party? It's a festive gathering of our guild members, spouses, relatives, and friends for that first peek at our 2013 Quilt Show before it opens to the general public. You're invited to be the first to learn which quilts were awarded ribbons and which quilt was judged Best in Show.*

*Sparkling beverages and delightfully delicious foods will be served. Then, choose your favorite quilts for the Viewers Choice Award and take a chance or two on the new feature, the Mini Quilt Raffle. So, bring a treat of finger foods and plan to have a great time viewing wonderful quilts and visiting with friends.*

*Tickets will be available at the April Guild Meeting and at the door for \$10.00.*

*Regina Liske, Preview Party*

*[bassetbooks@redshift.com](mailto:bassetbooks@redshift.com) or 831-333-9302*

*More Quilt Show News can be found beginning on page 8.*

## Next Workshop: **GWEN MARSTON** JUNE 1 AND 2

### **Liberated Medallion Quilts**

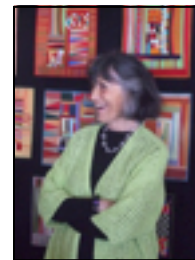
**Workshop:** Based on Gwen Marston's recent book, *Liberated Medallion Quilts*, published by AQS in 2012. As with all of Gwen's classes, she will present as wide a view of the topic as possible, so that students can make the kind of medallion they like best, be it more traditional or wildly liberated. Medallions are one of the great historical styles and provide a wonderful format for designing quilts, one border at a time. Gwen will have samples of various types of Medallion quilts in class for visual aids.

**Fabrics:** Think about the style of medallion you want to make and bring appropriate fabric. If you want to make something in the Martha Washington style, bring early reproductions. If you want to make something in the Gwenny and Freddy style, bring brights, or you can do it with Aunt Gracie's, or in solids for a dramatic look.



Do some homework to help you decide what kind of quilt you like. Gwen's book *Liberated Medallion Quilts* shows a wide variety of quilts and is full of possible ideas to guide you. Also, her book *Liberated Quiltmaking II*, has a chapter on Medallion quilts. Remember, a Medallion is a quilt that begins with a center area of interest (either an interesting pieced or appliqué block or a unique fabric) and builds outwards in a series of borders. If you can't figure out what kind of Medallion you want to make, bring some of your favorite fabrics and we will figure it out together.

To register, call Gail Abeloe at 831-375-4553 or go to [Workshop Registration Form](#). To learn more about Gwen, go to [www.gwenmarston.com](http://www.gwenmarston.com).



## Speaker: **Bobbie Moon**, continued from page 1...

*Right: Camp Shirt*

Since the beginning, New Moon Textiles has sold outstanding fabrics that compliment Guatemalan textiles such as batik cottons, silk dupioni, raw silk noil, hand-dyed fabrics, and colorful cottons. In addition, they carry quilt patterns and wearable art patterns that look great made in these fabrics.

Bobbie's path to store co-owner, teacher, and fine fabric importer was not linear. She'll share with us the sometimes circuitous route to where she is now. Bobbie is also well known for using silks in quilting and wearable art and will be teaching at Empty Spools detailing her techniques. She is filling in for Sonya Lee Barrington and is not currently listed on the Empty Spools website. Learn more about Bobbie Moon at [www.newmoontextiles.com](http://www.newmoontextiles.com).

Sally Miller, Programs

[dsmiller13673@yahoo.com](mailto:dsmiller13673@yahoo.com), 262-873-0384



### UPCOMING MPQG EVENTS

APRIL 1, 2013 - LECTURE  
BOBBIE MOON

APRIL 13-14, 2013 QUILT  
SHOW

MAY 6, 2013 - LECTURE  
[CAROL LARSON](#)

WEDNESDAY, MAY 29, 2012 -  
JUNE MEETING, GWEN MAR-  
STON

JUNE 1-2, 2013 -WORKSHOP  
GWEN MARSTON

### [Charity Quilt Friendship Group April Sew-In,](#) April 19, 2013

The Charity Quilt Friendship Group (CQFG) will be meeting at my home, near Laguna Seca on Friday, April 19. It is always pleasant when friends sew together. If you can come, please bring a sewing kit and maybe a rotary cutter and cutting board. We will meet between 9:30 a.m. and early afternoon so bring a bag lunch as well. Call for directions.

Terann Carr, Community Liaison  
[cacarrs@sbcglobal.net](mailto:cacarrs@sbcglobal.net), 831-375-7881

### FUTURE WORKSHOPS -

June 1-2, 2013  
Gwen Marston  
Liberated Medallion Quilts

October 6, 2013  
Rebecca Goldsmith  
1-Day Chirp - Appliqué  
with Attitude

## President's Message for February

### The Quilt Show is coming! The Quilt Show is coming!

Be prepared. Be ready. Do you have your Preview Party tickets? Have you signed up to work a shift? I always fondly remember past years of working with other quilters -- it's an enjoyable experience and a great way to develop new friendships.

Our April Quilt Show is our opportunity to share with the public our heritage of beauty and love of inherited quilts, to encourage excellence of design and craftsmanship of this American folk art, to educate and inspire, and to share companionships among quilters. Thanks to each and every one of you for all your hard work to make this an awesome quilt show.

Rejoice in the colors of springtime!

Carole Olsen, President

[caroleolsen@gmail.com](mailto:caroleolsen@gmail.com), 831-372-9289

## Guild news

### Members Teaching

Here are a few of our members who teach-

Learn to quilt ... Brush up on your skills ... Learn a new technique ... Try out a new color palette. Here are selections of the classes that are being taught by our very talented guild members -- the art of quilt making continues to grow.

Janet Taillon  
Teaches at Back Porch Fabrics  
[www.backporchfabrics.com](http://www.backporchfabrics.com)



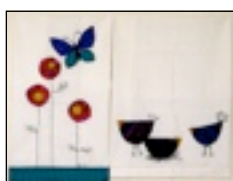
Karen Flamme -  
Teaches at Back Porch Fabrics  
[www.backporchfabrics.com](http://www.backporchfabrics.com)



Diane Costa Gabler  
Teaches at Back Porch Fabrics  
[www.backporchfabrics.com](http://www.backporchfabrics.com)



Elizabeth Olney  
Teaches at Back Porch Fabrics  
[www.backporchfabrics.com](http://www.backporchfabrics.com)



### Web Site News

Contributions welcomed at any time of the month! Photographs should be 300 ppi, .jpg or .tif format. Please do not add ANY formatting to articles. Submissions should be copyright free.

The new web site is now live at our old web address at [www.mpqg.org](http://www.mpqg.org).

Claudia Sammis, Webmistress  
[especials@sbcglobal.net](mailto:especials@sbcglobal.net) or 831-333-9133

### In this Issue

Advertiser Index, p. 4  
Event Calendar, p. 15  
Guild News, p. 3  
Other News and Classes, p. 13  
President's Message, p. 3  
Quilt Show News, p. 8  
Workshops, p. 2  
Workshop Registration, p. 6



Holly Casey Quilts

Custom Longarm  
Machine Quilting

45335 Vista Place  
King City, CA 93930  
(831) 385-3374  
[www.hollycaseyquilts.com](http://www.hollycaseyquilts.com)  
[holly@hollycaseyquilts.com](mailto:holly@hollycaseyquilts.com)



Left: Guests including MPQG members line up for an autograph copy of *Out of the Box with Easy Blocks* at the book signing on March 4th.

### Mary Lou Weidman, Mel McFarland and Friends at Back Porch Fabrics

Cow Parade, Quilts by Mary Lou Weidman, Mel McFarland, and Friends on exhibit from now to April 30 at Back Porch Fabrics, Pacific Grove, CA.

The Cow Stampede began very simply. Mary Lou designed and made her whimsically pieced "Purple Cow" and we included it as part of our book, "Out Of The Box With Easy Blocks." After our review of the book, and before its release, we tested the measurements of many of the quilts in the book, by making more.

Anticipating the quilts going on the road for trunk show promotions, Mel decided to replicate the cow quilt pattern, to have one of her own. "Holy Cow" seemed a perfect start. It was also a way to incorporate more of the book, by practicing the lettering and experimenting with making the monochromatic "background piecing."

The learning is easy, with our published measurements of quilt patterns in the book. We share a collection of bovine themes as inspiration, but our friends and students always amaze with more unique ideas. Many of these quilts have been developed in exciting and inventive workshops. Others have come from guild and shop challenges, exploring a variety of themes, styles & tastes.

The passion ignites when you customize the original patterns into extraordinary, over-the-top unique wall art. Let found objects, antique buttons and eclectic embellishments be your guide in the lively pursuit of quilt perfection. Of course, you can follow along with the easy book diagrams and directions and create your own four-legged fun.

We hope you enjoy this great gallery of invention, color and playfulness. Don't get left in the barnyard. Won't you come join the stampede?

For additional information, contact 831-375-4453 or [www.backporchfabrics.com](http://www.backporchfabrics.com). To learn more about Mary Lou, go to [www.marylouquilt designs.com](http://www.marylouquilt designs.com)

### MPQG BOARD: APRIL PROJECTS

- Quilt Show held during Good Old Days Celebration
- Choose the winning ticket of the Raffle Quilt
- Call for Challenge Quilt designs
- Assemble next Raffle Quilt and submit bid for quilting to the Board for approval

**The Last Stitch**  
*Every Quilt Tells a Story*  
 Let us design the perfect quilting pattern for your quilt.  
[www.LastStitchquiltingdesignstudio.com](http://www.LastStitchquiltingdesignstudio.com)

107 B The Alameda  
 PO Box 693  
 San Juan Bautista, CA 95045  
 831-623-4330  
[info@laststitchquiltingdesignstudio.com](mailto:info@laststitchquiltingdesignstudio.com)

**bella's**  
 STUDIO  
*Monterey's sewing, craft & design studio; where inspiration and creativity are set free.*

**CLASSES, WORKSHOPS, & SPECIAL EVENTS**

**BELLA LOFASO BRANCATO**  
 140 West Franklin St., Suite 205, Monterey, CA 93940  
[www.bellastudiomonterey.com](http://www.bellastudiomonterey.com),  
[bella@bellastudiomonterey.com](mailto:bella@bellastudiomonterey.com), 831.920.2272

### Advertiser Index

Back Porch Fabrics, Pacific Grove, p. 6  
 Bella's Studio, Monterey, p. 4  
 Empty Spools Seminars, p. 5  
 Family Threads, San Juan Bautista, p. 6  
 Monarch Knitting, Pacific Grove, p. 8

Professional Quilters  
 Get It Quilted! By Sharon Winter, Monterey, p. 5  
 Holly Casey Quilts, King City, p. 3  
 The Last Stitch, San Juan Bautista, p. 4



## **NEW MPQG Renewals, New Members Welcome fellow Quilters!**

### **New Members**

Jeanne Bartels, 459 High Street, Monterey, 93940,  
Home/cell: 831-402-0469, e-mail:

[JEBartels@comcast.net](mailto:JEBartels@comcast.net)

Dionys Briggs, 25270 Arriba del Mundo, Carmel,  
93923, Home Ph: 831-626-2624, e-mail:

[briggs@smartsite.net](mailto:briggs@smartsite.net)

### **Renewals:**

Dee Hatcher, 41754 CV Road, Greenfield, 93927,  
Home Ph: 831-659-4952, Cell: 831-238-2660,  
e-mail: [hatcher.dee@gmail.com](mailto:hatcher.dee@gmail.com)

Susan Moore, 4125 Arroyo Trail, Carmel, 93923,  
Home Ph: 831-625-5862, Cell: 831-277-1939,  
e-mail: [carmelpainter2@yahoo.com](mailto:carmelpainter2@yahoo.com)

Elizabeth Olney, 216 Wood St., PG 93950, home  
ph: 831-641-0662, cell ph: 831-521-8053, email:  
[eolney@rocketmail.com](mailto:eolney@rocketmail.com)

Carol Storm, 13644 Paseo Terrano, Salinas, 93908,  
Home Ph: 831-484-1707, Cell: 831-225-9618,  
e-mail: [cjstorm@comcast.net](mailto:cjstorm@comcast.net)

## **Member Mug Shots Online Member Directory**

Is your photo missing from the online member directory?  
For inspiration, check out those photos that were recently  
added.

Online MEMBER DIRECTORY - It's always up-to-date!!

1. Go to [www.mpgg.org](http://www.mpgg.org).
2. Click on the ABOUT US tab, and go down to MEMBER DIRECTORY.
3. To Log In for the first time, enter your email address in the space provided and click on "reset password" or "forgot password" and follow the instructions for adding your own favorite password.
4. Check your email for the link that is sent to you. Follow the instructions.
5. Now, you're logged in. Please go to your listing and make sure that it's correct. If you want to make changes, let me know.
6. Next add your photo to the online directory by sending me your "mug shot" in .jpg format? (See mine at Claudia Sammis, as an example.) Let's make it easy for those of us with bad memories to attach a name to a face.
7. Returning members to the site can simply log in again with their email address and usual password. No need to remember any special user name as before.

No photo? I'll bring my camera to the next few meetings. If you'd like me to take your picture, just put on your lipstick and flag me down. You'll recognize me from my snapshot that's in the directory.

Claudia Sammis, Communications  
[especials@sbcglobal.net](mailto:especials@sbcglobal.net), 831-333-9133



**JOIN US  
at  
Empty Spools  
Seminars  
2013**

**Asilomar Conference Grounds**  
5-day Quilting Workshops  
sponsored by:  
Gayle Wells and Suzanne Cox

held at  
**Asilomar Conference Grounds**  
"Refuge by the Sea"  
Pacific Grove, California  
**\$1294.00**  
per session

Price includes 5-day workshop with your  
selected instructor, all meals, and lodging  
(double occupancy). Single supplement available

Session I	Feb 24 - Mar 1
Session II	Mar 1 - Mar 6
Session III	Mar 26 - Mar 31
Session IV	Apr 2 - Apr 7
Session V	May 26 - May 31

For more information write to:  
5306 Springside Court, Fairfield, CA 94534-4008  
(707) 864-1170, phone (707) 864-1345, fax  
E-mail: [info@emptyspoolseminars.com](mailto:info@emptyspoolseminars.com)  
View our website brochure:  
[www.emptyspoolseminars.com](http://www.emptyspoolseminars.com)

## *Get It Quilted!* *By Sharon Winter*

- ✦ Creative custom quilting on a domestic machine
- ✦ Award-winning fine hand quilting
- ✦ Binding, basting, design and quiltmaking services

*Please call for an appointment (831) 647-8769*

Monterey Peninsula Quilters Guild <b>Workshop Reservation</b>				Members	Non-Members*
<input type="checkbox"/> Saturday, Sunday	June 1 & 2	Gwen Marston	<i>Liberated Medallions</i>	\$100.00	\$120.00
<input type="checkbox"/> Sunday	October 6	Rebecca Goldsmith	<i>1 Day Chirp – Appliqué with Attitude</i>	\$50.00	\$60.00
Name					
Address					
Telephone					
email					
✂ ✂ ✂ ✂ ✂ ✂ ✂ ✂ ✂ cut here ✂ ✂ ✂ ✂ ✂ ✂ ✂ ✂					
For your records:	You are registered for: <input type="checkbox"/> Saturday and Sunday, June 1, 2, 2013 <i>Liberated Medallions</i> with Gwen Marston <input type="checkbox"/> Sunday, October 6, 2013 <i>1 Day Chirp – Appliqué with Attitude</i> with Rebecca Goldsmith				
Send to:	Make check payable to MPQG. Send to: Workshop Registration, MPQG, PO Box 1025, Pacific Grove, CA 93950.				
Questions?	Gail Abeloe at Back Porch Fabrics 831-375-4453.				
Time:	Doors open at 9:40 a.m. Workshop is 10:00 a.m. to 4:00 p.m.				
Note:	<b>Reservations are secured when payment is received.</b> To cancel and receive a refund, cancellation must be made at least 7 days in advance. Nonmember reservations will be accepted 30 days prior to workshop.				
Supply List:	<a href="#">Supply List</a>				
Location:	Health and Fitness Room at the Sally Griffin Center, 700 Jewell Avenue, Pacific Grove, CA 93950.				
Food:	Plan on bringing your lunch, snacks, and beverages.				
* Non-Member registration is accepted 30 days prior to the workshop.					



**Back Porch Fabrics**  
*Fabulous Fabrics, Books & Quilting Tools*

**Gail E. Abeloe**

(831) 375-4453      Gail@backporchfabrics.com  
 (831) 375-3755 fax      www.backporchfabrics.com  
 157 Grand Avenue at Central, Pacific Grove, CA 93950



*Family Threads*  
 QUILT SHOPPE

107-D The Alameda      Phone (831) 623-0200  
 PO Box 1203      Fax (831) 623-0300  
 San Juan Bautista, CA 95045      FamilyThreads@att.net

www.FamilyThreads.org  
 Hours: Tues-Fri 10-5, Sat 10-4, Closed Sun & Mon

## 2013 Challenge Quilt Inspired by Crayola Colors

*Right: Worker at the Crayola factory in Pennsylvania.  
Which MPQG member chose this blue for their challenge?*

Quilt Challenges are typically held once a year in the Spring. The quilts are shown at the Monterey County Fair in August/September and again at the MPQG Quilt Show the following April. The challenge might involve the use of specific fabrics, a particular theme, size, etc.

Deadline: Usually the July or August guild meeting.

### 2013 Crayola Challenge

1. Draw a crayon from the bag at the guild meetings. That color and its various shades will be the color of your fabrics and embellishments. You can also add small bits of black and white fabric, if desired.
2. The theme is the maker's choice.
3. Create a 15" x 20" quilt with either a vertical or horizontal orientation.
4. The actual crayon must be attached to the front of the quilt either temporarily or permanently.
5. The quilt must have a top, batting, and back (3 layers). The maker may use any quilt method.
6. Deadline: Bring your finished quilt to the August meeting in a brown bag. Quilts will be hung and MPQG members will vote for their favorites.
7. Ribbons will be given for 1st, 2nd, and 3rd place.
8. All quilts will hang at the 2013 Monterey County Fair, August 28 through September 2, and at the April 2014 MPQG Quilt Show.

### Did you know?

Crayola is proud to make the great American crayon, a quintessential school supply, right here in the USA.

Crayola believes the nation's children will become the next creative thinkers, dreamers and inventors. They need the best tools to bring their original ideas to life.

From the 8-count all the way up to the 120-count box, the company's regular-sized crayons, including reds, whites, blues and every color in between are all made in Easton, Pennsylvania by a dedicated workforce that is 1,200 strong.

Crayola makes their crayons using the finest pigments for intense color, and is a special blend of paraffin wax for smoothness and clay for strength.

At the manufacturing facility in Pennsylvania, Crayola makes 650 crayons per minute and up to 13.5 million crayons a day!

More than 400 different crayon colors are made, including favorites such as burnt sienna, carnation pink and midnight blue.

On average, the company makes 3 billion crayons a year, enough to circle the world six times. In addition to being made in America, Crayola's crayons have gotten greener. A solar farm located in Forks Township, PA, provides enough power to make 1 billion of 3 that it produces each year. Each box has a sun icon, letting parents, teachers and children know that Crayola crayons are now made by the sun.

Joan Hughes, Challenge, [pgquilter@sbcglobal.net](mailto:pgquilter@sbcglobal.net), 831-373-0843 - Barbara Barrieau, Challenge, [rickbarbara@sbcglobal.net](mailto:rickbarbara@sbcglobal.net), 831-384-7784 - Allison Barrett, Challenge, [allison16@comcast.net](mailto:allison16@comcast.net), 831-625-9611



## The Quilt Show is Almost Here

APRIL 12 TO 14, It's time!

- Put the last stitches in your quilt show entry
- Sign up for your favorite volunteer assignment
- Spread the word to your friends, family, and neighbors

### **The 2013 MPQG Quilt Show is here!**

The quilt show committees have been pouring their energies into producing an incredible showcase for your fiber masterpieces. April 13-14, Chautauqua Hall will be an unmatched gallery of color and creativity. Everyone's hard work will be rewarded with ooh's and ah's galore.

### **Friday, April 12**

Join the preview party on Friday night from 6:00 to 8:00 p.m. Sip a little champagne. Enjoy a tasty treat. Marvel at the creations of your fellow artists.

### **Saturday, April 13**

Line up for the parade down Pine Avenue on Saturday morning. You and your loved ones are invited to wrap up in a quilt and march behind the MPQG banner in the Good Old Days parade.

### **Saturday and Sunday, April 13-14**

Those all-important dates will find us straightening quilts, selling tickets, hanging signs, and enjoying the fellowship of the quilting community. We'll also educate and delight our many visitors to Chautauqua Hall. Late Sunday afternoon, the winning tickets will be drawn for the 2013 Raffle Quilt, Spirit of the Holidays, and for each Mini Quilt. The elated winners will expand our community of quilting enthusiasts.

Your hard work and vision ensure the success of the 2013 MPQG Quilt Show. Join us at Chautauqua Hall April 12-14 to relish the rewards of a job well done.

Susan Riddoch, Quilt Show Chair  
[srboke@sbcglobal.net](mailto:srboke@sbcglobal.net), 831-449-6315 or cell 831-905-6416





## Monarch Knitting

Everything for the knitter, spinner and weaver.  
Plus crochet, embroidery and needlepoint threads.

529 Central Ave. Ste. 3  
Pacific Grove, CA 93950  
831-647-YARN (9276)  
1-888-575-YARN (9276)

Joan Williams  
[joan@monarchknitting.com](mailto:joan@monarchknitting.com)  
[www.monarchknitting.com](http://www.monarchknitting.com)  
Mon-Sat 10-5:30, Sun Noon-4

### Seeking White Glove Ambassador Help

White Glove Ambassadors & Security Volunteers are needed for the Quilt Show.

**Work shifts:** 1 hour and 45 minutes. Shifts are DIVIDED so that each volunteer has an opportunity to STAND for part of the shift while performing white glove ambassador duties, and to SIT while monitoring a door.

**White Glove Ambassador:** Meet old friends and make some new friends while protecting our quilts by using white gloves to turn them for better visitor viewing. Take the opportunity to talk about the quilts and quilting to the best of your ability while promoting our guild.

**Security:** Sit down if you like while monitoring a door during part of your shift.

It's all very easy and it's fun. Please sign up at the next guild meeting, sign up on line, or contact me.

Marjorie Longo, White Glove Chairman  
[frumml@aol.com](mailto:frumml@aol.com), 831-624-8649



## Quilt Show Edition

Chautauqua Hall  
16th Street at Central Avenue  
Pacific Grove

Thursday & Friday, April 11 & 12 - **Set Up**  
Friday, April 13 - **Preview Party**  
Saturday & Sunday, April 13 & 14 - **Quilt Show**

*Help keep Susan Riddock sane!*

### Volunteer

Call Dee Davis at  
831-372-6454



Admissions -	Sunday	3:25-5:00	2
DIY Garage Sale	Sunday	ALL DAY	2 each shift
Hanging & Dismantling	Thurs, Sun	Each day	15 y
Finance	Friday	6:00-7:00	1
		7:00-8:00pm	1
Door Sitters	Friday	10:00-9:00	All Shifts/2 each
Overnight Security	Thurs, Fri, Sat	Nightly	1+
Raffle Quilt	Saturday	3:15-5:00	1
White Glove & Security	Sat, Sun	All Shifts up to each shift	5

Boutique - Remember, if you're selling in the Boutique you owe work time there too!

Sign up to fill these important volunteer vacancies! We need all members to help make this the best quilt show ever! You can see, we still have lots of spaces available!

Remember, as part of our membership obligation, we all need to volunteer for four hours at the Quilt Show. The sweetener is that if you sign up for four hours, you get in free! Be sure to sign up early, so that you can get the committee and hours you want to work.

Dee Davis will be at the April MPQG Meeting with sign-up sheets for  
all the shifts for all of the Committees.

Volunteer Coordinator, [quilterdee@gmail.com](mailto:quilterdee@gmail.com),  
831-372-6454, or cell 831-521-6506

## Publicity for the Quilt Show

We're getting down to the wire on publicity for the Show and I need your help to create some buzz around our event. I've got two of our members lined up for stories and interviews with our local media but we need some personal outreach to help get the word out beyond. There are two things you can do to help get the word out.

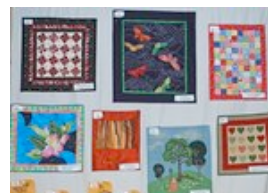
1. Post a picture of the Opportunity Quilt or one of your own quilts to Facebook. Doesn't need to be a quilt that will be in the show. Invite your Facebook friends to come to the show and ask them to tell their friends about the show.

2. Print the poster (it's set up for 8 1/2" x 11") and ask your local library, your church bulletin board person or someone from a shop you frequent if they'll display the poster. OR, let me know where you'd like me to send one. If you do that, please be sure you include the name and complete address of where you'd like me to send it.

Thanks so much.  
Fatima Dias, Publicity  
[mafadimo@yahoo.com](mailto:mafadimo@yahoo.com),  
831-649-1911

## Last Chance ... Mini Quilt Raffle 2013

*Right: A few of the 2012 mini quilts.*



If you thought that you had missed your chance to donate a mini quilt for the fund raising raffle at the Quilt Show.....here's your last chance!

Make a small quilt (any size from postcard size to a perimeter size of 120 inches (such as 30" x 30") ... or a quilted piece such as a purse, vest, shopping bag, or ???

Deadline: April meeting. Note: This quilt does NOT count as a quilt show entry and does not require an entry form.

Tina Magill, Mini Quilt Raffle Team  
[magill1242@gmail.com](mailto:magill1242@gmail.com), 831-649-1987

## Sleep with 100+ Quilts

Slumber party? Poker night? Alone time? Quilt preview?

Put your own spin on providing overnight security for the Quilt Show. Security volunteers are needed for three nights at Chautauqua Hall. There must be one adult in each security detail. Bring your sleeping bag and enjoy a night out. We hear that Susan has offered pizza delivery!

To volunteer, contact Rita Jacques at  
[stan2rita@sbcglobal.net](mailto:stan2rita@sbcglobal.net), 831-484-1467.

### Quilt Show Judging & Entries

#### Update

**CONGRATULATIONS!** We have received 129 entries for the quilt show. There are 37 entries that will be judged. Now, the difficult job is making sure they get finished on time for the show.

**WHAT HAPPENS NOW?** The acceptance letters will be mailed to you by March 15. If you have a change of address please let us know in advance. Once received, proofread the information carefully paying particular attention to the judging category. Report any errors, no matter how small, to Sharon Winter at 831-647-8769 as soon as possible.

You will also receive a paper label for your quilt that **MUST** be sewn on the back according to the directions. Instructions for making a sleeve will also be included.

If your quilt is **NOT** being judged, it must be delivered Thursday, April 11, between 7:30 a.m. and 11:00 a.m. Quilts that are being judged must be delivered Thursday, April 11, **BEFORE** 9:00 a.m. We urge you to write the date and time that your quilt must be delivered to Chautauqua Hall on your calendar. This is important.

**WHAT IF SCENARIO?** If you cannot finish your quilt for the show (we know there can be emergencies), please call one of the designers, Martha Martin at 831-206-2293 or Janyce Anderson at 831-659-3505, at least 1 week prior.

We are excited and looking forward to this great show! Thank you for making it possible.

Gloria Hatton, Judging and Entries  
[hatton13@comcast.net](mailto:hatton13@comcast.net), 831-649-3562

### The Boutique is Coming!

**APRIL 13 AND 14**

A showcase for member's handiwork and art for sale.

**What?** Sewing-related items are the criteria - quilts, table runners, pincushions, sewing sets, purses, bags, etc.

**Space is limited** - You may submit as many items as you wish but only up to 5 items of any one product. That way there is room for everyone's pieces. The more the variety the better the eye appeal. We have been successful in the past and hope this year will be even better.

**Cost** - The cost to participants is an even division of the \$100.00 vendor fee. For example, if there are 10 participants, your cost is \$10.00. The Boutique management is responsible for a tax ID number and for paying the sales tax.

**Pricing Guidelines** - A good way to get pricing ideas is to Google your type of article to be sold. Sources such as "Etsy," "eBay," and the like will give you a feel of what you should charge and be very surprised at what people do charge.

**Sign up Your Products** - There are no entry forms, but I will have sign-up sheets at the April guild meeting, or you can email or call me. Phone is always better for me. If you do decide to put some things in the Boutique, I have a handout that I will give to you. Hope to hear from you.

**Sign Up To Sell** - We always need help in the booth selling, making change, bagging, restocking, etc. Again, at the coming guild meeting I'll have sign-up sheets ... or give me a call.

**Income** - Each artist keeps the net proceeds from their own sales.

**Deliver your Art** - Friday, April 12, in the morning to Chautaugua Hall.

**Pick up Unsold items** - Sunday, April 14, 5:00 p.m.

June Cornell, Boutique Coordinator  
[junecornell@yahoo.com](mailto:junecornell@yahoo.com), 831-757-1390



## DIY Garage Sale

### Guidelines

**This is a DIY (do it yourself) project.** This year, the Garage Sale will share space with the Boutique in Chautauqua Hall. Consequently, space is limited.

### Big Picture:

**ONLY quilting fabric** will be sold. It must be

- \* measured (mark yardage on tape), and
- \* rolled and taped with blue painter's tape.
- \* Fat quarters must be taped singly or in a stack

**NO** batting, notions, trims, patterns, books, etc.

**NO ODORS** (fresh, not musty nor smelling of laundry products or smoke); and

**NO LOOSE FABRIC.** Do not turn in any loose fabric, it will be thrown out. Honest.

### How to -- MEASURE AND ROLL

- 1) One fabric per roll.
- 2) Use a zipper lock plastic bag if there are many pieces of the same fabric.
- 3) Fold fabric selvage to selvage then measure along selvage to the nearest complete quarter-yard increment.

### How to -- MARK

One piece measured along selvage could be described as

- \* fat quarter+ (18" X 27")
- \* 2+ yds. (two healthy yds. selvage to selvage plus a little more)
- \* 2 yds. (any healthy yds. selvage to selvage to the nearest 1/4 yd.)
- \* 2 yds. total (one piece with over a healthy 1 yd. selvage to selvage and a total of 1 more yd. of oddly cut fabric)

### How to - TURN IN FABRIC

Turn in prepared fabric on Friday, April 12th at Chautauqua Hall in Pacific Grove at 16th and Central between 8:00 a.m. and 11:00 a.m. You **MAY NOT** turn in fabric rolls at any Guild meeting.

Note: To turn in fabric early, you may contact me **ONLY** if you are coming from **OUT OF TOWN** on Thursday the 11th to turn in quilts for the show. Otherwise, please do not ask for exceptions, ask a friend to bring your fabric in Friday a.m.

Shopping Etiquette: Patrons may lose privileges for opening packages or breaking tape.



*Above: An example of how the fabrics should be rolled and marked*

Terann Carr, DIY Garage Sale  
[cacarrs@sbcglobal.net](mailto:cacarrs@sbcglobal.net), 831-375-7881



## **BELLA'S SEWING FUNDAMENTALS CLASSES**

Now till - APRIL 6, 2013 5PM

**Bella Lofaso Brancato** teaches this Sewing Fundamentals series with emphasis on learning the foundations of sewing. No matter what your skill level, having a solid understanding of how your sewing machine operates, the properties of fabrics, cutting, marking, layout and pressing, will help you enjoy your sewing journey.

**Cost:** \$45 per single class - or \$125 for each 3-class series. Note: Some workshops have an additional materials fee for the specific class project - fees are noted below. For additional help and sewing time, you can purchase a Studio Punch Card. Cost: \$70 for 10 hours of Open Studio time.

**Series #1 - In the Beginning (3 classes)** This 3-class series will cover all the fundamentals to get you started on your successful sewing journey!

**Week 1 - Making Friends with Your Sewing Machine.** The sewing machine is a vital element of the sewing experience—knowing how it operates is paramount. Today's sewing machines have kept up with technology and are easy and fun to use. Choose Thursday or Saturday class: Thursday, March 21, 6:00 - 9:00 p.m. or Saturday, March 23, 1:00 - 4 p.m.

**Week 2 - It's All in the Cut.** Understanding the properties of grain dictates the layout of your pattern pieces. It does not matter if your project is simple or complex -- grain and proper layout is always essential. Choose Thursday or Saturday class: Thursday, March 28, 6:00 - 9:00 p.m. or Saturday, March 30, 1:00 - 4 p.m.

**Week 3 - Let's Sew Something.** Different seams and sewing construction techniques will be taught. Your first project will be a darling Chicken Pin Cushion! Choose Thursday or Saturday class: Thursday, April 4, 6:00 - 9:00 p.m. or Saturday, April 6, 1:00 - 4 p.m. There will be a materials fee of \$10 for supplies.

Reserve Your Class Today! 831-920-2272. Bella's, 140 W. Franklin St., Suite 205, Monterey, CA 93940. [For info, www.bellastudiomonterey.com](http://www.bellastudiomonterey.com).

### **Folk Indian Textiles at SJ Quilt Museum**

Now to – April 28, 2013

This unique exhibition demonstrates the depth and breadth of the Indian folk textile tradition. It showcases a wide variety of decorated textiles, created with brightly colored patchwork, embroidery, appliqué, tie dye, block printing, painted cloth, quilting textiles, hand weaving, and hand sewing to dramatic effect. These objects are from the private collection of local artist Carol Summers. The collection is comprised of a range of textiles created by women in India— both utilitarian and festive— with no pretense of being comprehensive.

To RSVP and for information, go to [www.sjqUILTmuseum.org](http://www.sjqUILTmuseum.org).



Free Pattern Demos  
Saturday, April 20, 2013  
10:30 and 2:00  
by Gail Abeloe

- \* Free Quilt Pattern
- \* Demo on how to sew the pattern
- \* Door Prize at both sessions
- \* Show and Tell

No need to sign up, just show up and enjoy the fun.

When you attend 4 demos and bring back 3 projects made with Back Porch fabrics, you will earn a free class!

Location: Back Porch Fabrics, Pacific Grove, CA.

For a class schedule, go to <http://www.backporchfabrics.com/>

## **'Tis The Empty Spools Season, Part II**

As I write this I've just returned from the March 5th Empty Spools "walk about" otherwise known as this session's open house. What an inspiring hour and a half! We wandered through the classrooms talking to the teachers and seeing the student's work. It always amazes me that students can make such progress in 5 days. By the way, the students of our March speaker, Esterita Austin, were no exception -- self portraits in imaginative colors.

Just one AHA Moment ...

This is a continuation of my Workshop Bucket List article that appeared in the February Pines & Needles. As I mentioned then, each year I manage to check another workshop artist off the list. Each of the seminars below have the potential to provide that one AHA tip or technique that we all look for from a really good teacher. I hope that you are attracted to some of these classes as well.

First! Go online to [www.emptyspoolsseminars.com](http://www.emptyspoolsseminars.com) and check out Sessions III and IV. You'll find it helpful to see the photographs as you read along.

Session III, March 26 - 31, and Session IV, April 2 to 7 come up next and it may not be too late for you to squeeze into one of the Seminars if your schedule permits. The first year that I attended Empty Spools, I called at the 11th hour and luckily there had just been a cancellation for the class that was my first choice. It could happen.



### **Bucket List ... continued from February Issue**

Patty Hawkins is teaching Collage the Essence! Landscapes & Haikus. MPQG guild member, Elizabeth Hull, has a lovely quilt with Haiku verse that she wrote which introduced several of us to this concept. Five days with Patty would provide a supportive atmosphere to get the hang of writing simple verse and creating the ethereal landscape to go with it.

Jan Krentz will be doing Quick Star Exploration and Design. Stars, either structured or wonky, make such appealing quilts that this is very tempting. Jan, of course, is a terrific teacher with loads of personality and will share some of her new, unpublished stars.

On my list, believe it or not, is Brenda Papadakis with the Dear Jane quilt. Part of me thinks that if I made a small block each day, it would be very soothing, and in a year or so I'd have the many blocks finally finished. The other part of me thinks I'd have a nervous breakdown -- so, it's at the bottom of the bucket.

The following session in early April is also packed with possibilities. I can testify that Lenore Crawford is an amazing teacher. We know that Jean Wells Keenan and Laura Nownes are equally talented teachers because they've been speakers at MPQG.

Here are three other classes that caught my eye. Cheryl Malkowski with Radiant Jewels promises that she has an easy freezer paper paperless piecing technique for the 50" star that is illustrated in the brochure. Best part is that there are no paper shards all over the house. The star is gorgeous, almost snowflake-like with many points to deal with so this technique could be most valuable to learn.

Next is Wendy Mathson with Storm at Sea "The Wendy Way." She specializes in adapting patterns, such as Storm at Sea, that call for straight line piecing, but appear to the eye to be curved. Whether you enjoy traditional patterns or creating art quilts, this technique could have many possibilities beyond Storm at Sea.

Last, take a look at RaNae Merrill's Magnificent Spiral Mandala. This is a contemporary version of the kaleidoscopic quilt but this one is based on the Twisted Log Cabin block. Definitely worth exploring.

### **Mark Your Calendar**

Be sure to go to the Open Houses at 4:00 p.m. on March 30 and April 6. Merrill Hall, Asilomar, is a good place to pick up a map and start your walk about. See you there.

Let us hear from you about your favorite days-long workshops especially if they are drivable and don't require an airline flight. Tell us about that one super aha! technique that you learned and we'll share it next month in Pines & Needles.

Claudia Sammis, Communications  
[especials@sbcglobal.net](mailto:especials@sbcglobal.net), 831-333-9133

## Road Trips & Local Events

### Calendar, Road Trips, and Local Fun Stuff

#### March Events

**Now to April 28, 2013 5pm**, San Jose Quilt Museum, *Folk Indian Textiles* from the collection of Carol Summers, Contact 408-971-0323, or [www.sjqquiltmuseum.org](http://www.sjqquiltmuseum.org).

**Now 12pm to - April 28, 2013 5pm** San Jose Quilt Museum, *Meditation in Space and & Time* from Junco Sato Pollack Sutra Chants Hangings and Stitch by Stitch Mandalas. Contact 408-971-0323, or [www.sjqquiltmuseum.org](http://www.sjqquiltmuseum.org).

**Now to - Aug 18, 2013**, The Museum of American History, *From Fiber to Fabric*, Located at 351 Homer Avenue, Palo Alto between Bryant and Waverley Streets. Contact Laurie Hassett, 650-321-1004, [www.moah.org](http://www.moah.org).

**Now to - April 30, 2013**, Back Porch Fabrics, *Cow Parade*, Quilts by Mary Lou Weidman, Mel McFarland, and Friends on exhibit. Back Porch Fabrics, Pacific Grove, CA. Contact 831-375-4453 or [www.backporchfabrics.com](http://www.backporchfabrics.com).

**Mar 21, 2013 9am - Apr 6, 2013 5pm**, Bella's Studio, *Sewing Fundamentals Classes*. 140 W. Franklin St., Suite 205, Monterey, CA, 93940 831-920-2272. For info, [www.bellastudiomonterey.com](http://www.bellastudiomonterey.com).

**Mar 21, 2013 - Mar 23, 2013**, California Exposition & State Fair, Sacramento, *Quilt, Craft & Sewing Festival*, Sacramento, CA. For info, [www.rustybarn.com/2013-festival-dates.html](http://www.rustybarn.com/2013-festival-dates.html).

**Mar 23, 2013 - Mar 24, 2013**, Foothill Quilters Guild Quilt Show, *Primetime in the Foothills*. **Special guest, Freddie Moran**. Gold Country Fairgrounds, Auburn, CA. For info, [www.foothillquilters.org](http://www.foothillquilters.org).

**Mar 23, 2013 - Mar 24, 2013**, North Wind Quilters Guild Quilt Show, *Spring Fling*. Fairfield Senior Center, 1200 Civic Center Drive, Fairfield, CA 94533. For info, [www.northwindquiltersguild.com](http://www.northwindquiltersguild.com).

**Mar 25, 2013 9am - 11am**, Santa Clara Valley Quilt Association General Meeting: *Speaker Marcia Stein*. Meet at Westgate Community Bible Church, 1725 Saratoga Ave., San Jose, CA 95129. For info, [www.scvqa.org](http://www.scvqa.org).

**Mar 26, 2013 9am- 4pm**, Santa Clara Valley Quilt Association, *Picture This!* Marcia Stein Workshop. Meets at Westgate Community Bible Church, 1725 Saratoga Ave., San Jose, CA 95129. For info, [www.scvqa.org](http://www.scvqa.org).

**Mar 30, 2013**, Empty Spools Seminar III, Asilomar, CA. Open house in classrooms. For info, [www.emptyspoolsseminars.com](http://www.emptyspoolsseminars.com).

#### April Events

**Apr 2 - Apr 7**, Empty Spools Seminar IV, Asilomar, CA. *Open house* in classrooms is April 6. For info, [www.emptyspoolsseminars.com](http://www.emptyspoolsseminars.com).

**Apr 6, 9am - Apr 7, 5pm**, Guild of Quilters of Contra Costa County *Quilt Show*, 5298 Clayton Road, Concord, CA 94521 For info: [www.contracostaquiltguild.org](http://www.contracostaquiltguild.org)

**Apr 8, 7pm- 9pm**, Valley Heritage Quilt Guild Meeting and *Trunk Show with Joan Rexroth and Friends*, Bible Church, Jolon Road, King City, CA, For info contact Holly Casey, for info: [holly@hollycaseyquilts.com](mailto:holly@hollycaseyquilts.com).

**Apr 11, 9am - Jun 1, 5pm**, Bella's Studio, *Sewing Fundamentals Classes*. 831-920-2272. 140 W. Franklin St., Suite 205, Monterey, CA 93940. For info, [www.bellastudiomonterey.com](http://www.bellastudiomonterey.com).

**Apr 12, 10am - Apr 14, 4pm**, *Best of the Valley* Quilt Show. McDermont Field House, 365 N. Sweet Brier, Lindsay, CA 93247 (559) 562-3326. For info, call Suzanne 559-625-5430 or email: [www.botvquilts.com](http://www.botvquilts.com).

**Apr 13, 10am - Apr 14, 5pm**, MPQG Annual Quilt Show, *Quilts by the Bay*, Pacific Grove, CA. For info, [MPQG ANNUAL QUILT SHOW](http://MPQG-ANNUAL-QUILT-SHOW)

**Apr 15, 7pm - 9pm**, Santa Clara Valley Quilt Association, General Meeting: *Speaker Colleen Granger*. Westgate Community Bible Church, 1725 Saratoga Ave., San Jose, CA 95129. [www.scvqa.org](http://www.scvqa.org)

**Apr 16, 9am - 4pm**, Santa Clara Valley Quilt Association, *Workshop: Circle Quilts*. Westgate Community Bible Church, 1725 Saratoga Ave., San Jose, CA 95129. For info: [www.scvqa.org](http://www.scvqa.org)

**Apr 17, 10am - 4pm**, Quarterly NCQC Meeting, *Meet the Teachers*, 1000 Kentucky St., Fairfield, CA 94533 [www.ncqc.net](http://www.ncqc.net).

**Apr 19, 9am - Apr 21, 5pm**, Cabrillo Extension, Santa Cruz, *Wearable Art Class* with Diane Ericson. For info: [www.cabrillo-extension.org](http://www.cabrillo-extension.org)

**Apr 19, 9:30am- 4pm**, Charity Quilt Friendship Group Sew-In (CQFG), for info, contact Terann Carr, Community Liaison, 831-375-7881 or [cacarrs@sbcglobal.net](mailto:cacarrs@sbcglobal.net).

**Apr 20, 10am - Apr 21, 4pm**, Amador Valley Quilt Show, *Quilts from the Heart*, Alameda County Fairgrounds, Pleasanton CA (Bernal exit off 680). [www.amadorvalleyquilters.org](http://www.amadorvalleyquilters.org)

**Apr 20, 10am - APRIL 21, 4pm**, Santa Clara Convention Center, *Shower of Stars* Quilt Show, Santa Clara Convention Center, 5001 Great America Parkway, Santa Clara 95054. For info: [www.scvqa.org](http://www.scvqa.org)

**MONTEREY PENINSULA QUILTERS  
GUILD  
PO Box 1025  
PACIFIC GROVE, CA 93950**

**DO NOT FORWARD  
ADDRESS CORRECTION REQUESTED**

**General Meeting: April 1, 2013 ♦ 6:30 p.m.**

**Location:**

Pacific Grove Community Center  
515 Junipero Avenue (at 15th)  
Pacific Grove, CA 93950

**Meetings** are usually held the first Monday of the month at 7:00 p.m. Many members arrive at 6:30 p.m. for an informal social time. Please check the front page for any schedule or location change.

**Membership:** New members are always welcome! Dues are \$35.00, and are due by the September general meeting in order to be listed in the current directory.

**Guests** are welcome. A \$5.00 fee is charged for entry and participation. Please ask your guest to stop at the membership table.

**Pines & Needles Newsletter**

This newsletter is published monthly for the benefit of our members. It is available online at [www.mpqg.org](http://www.mpqg.org). Articles are due on the 15th of the prior month. Please send items to the editor via email at [especials@sbcglobal.net](mailto:especials@sbcglobal.net).

"Pines & Needles" newsletter editor reserves the right to edit all submissions for content, length, or otherwise for publication.

Advertising Rates per Issue: \$5.00 Business Card; \$10.00 1/4 page; \$18.50 1/2 page; and \$30.00 full page. Annual rates are available. Advertisers should be quilting-related businesses.

**Privacy Policy**

Any contact information provided in this newsletter – whether phone number, email, address or otherwise – is for the convenience and use of MPQG members, our advertisers and sponsors, and sharing newsletter guilds only. The information may not be sold or used for advertising, spam, commercial or other purposes without the written approval of the MPQG Board.